

# ROUGH COUNTRY

## SUSPENSION SYSTEMS®

0.25 (Typ)  
[6.3 mm]  
27.11  
[688.7 mm]

Please read and understand all instructions before starting the installation. The manufacturer is in no way responsible for any personal injury or vehicle damage that may occur during the installation or use of this product. **CAUTION:** This product is designed primarily to enhance the appearance of this vehicle. Do not rely on it in any way to protect against injury or death in the event of an accident.

### **TOOLS REQUIRED:**

19mm Wrench & Socket  
Flat Screwdriver or Panel clip pliers  
Phillips Screwdriver

### **KIT CONTENTS:**

#### **Bumper:**

12mm X 40mm Bolts (4)  
12mm Lock Nuts (4)  
12mm Flat Washers (8)  
12mm Lock Washers (4)

#### **Light Bar Hoop:**

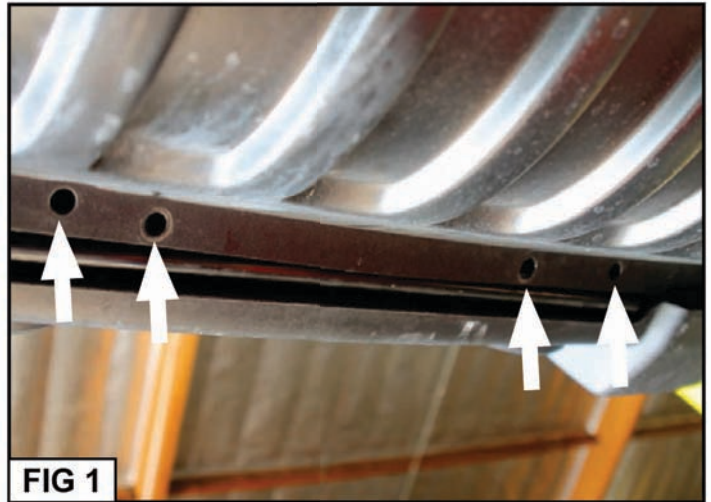
8mm x 25mm Bolts (8)  
8mm Flat Washers (8)  
8mm Lock Washers (8)  
8mm Nuts (8)

#### **Flush Mount Lights:**

5mm Bolts (8)  
5mm Flat Washers (8)  
5mm Lock Washers (8)

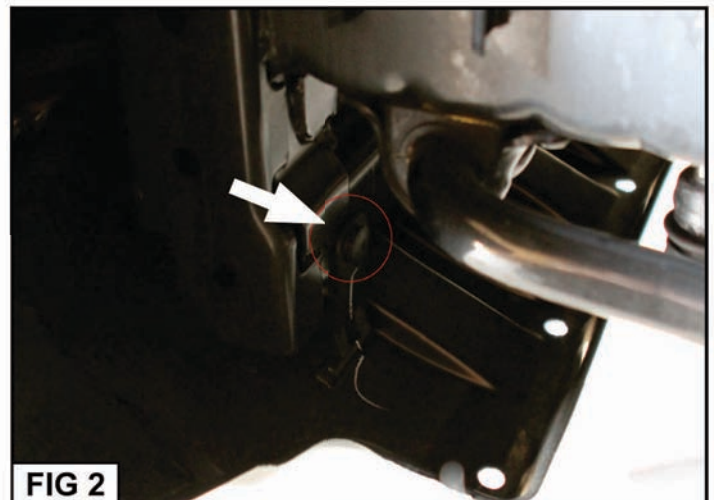
### **STEP 1**

Remove the plastic cover below the bottom of the Jeep. Using panel clip pliers or a flat screwdriver, remove the 4 plastic fasteners along the bottom front of the plastic cover shown in Fig 1.



### **STEP 2**

With panel clip pliers or a flat screwdriver again, Remove 2 plastic fasteners from behind the Plastic Shield Cover shown in Fig 2.



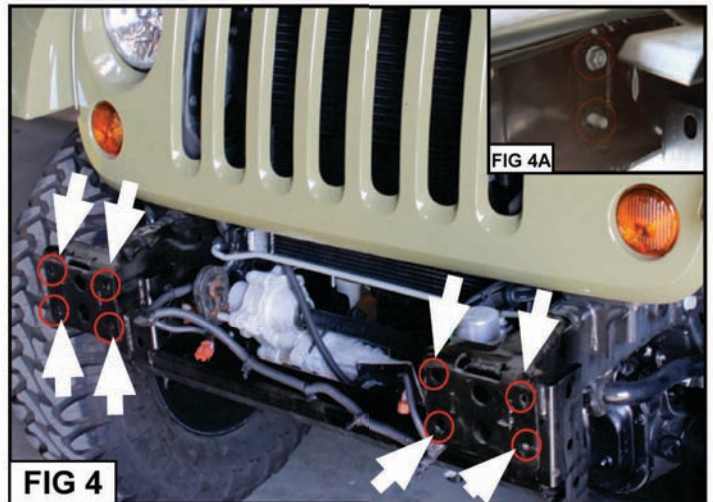
**STEP 3**

With a Phillips Screwdriver, Remove the 2 plastic screw clips along the top of the plastic cover shown in Fig 3.



**STEP 4**

There will be 8 19mm nuts that connects the bumper to the frame, using the 19mm socket & ratchet, remove these 8 nuts (2 on each side of the frame.) shown in Fig 4 & 4A



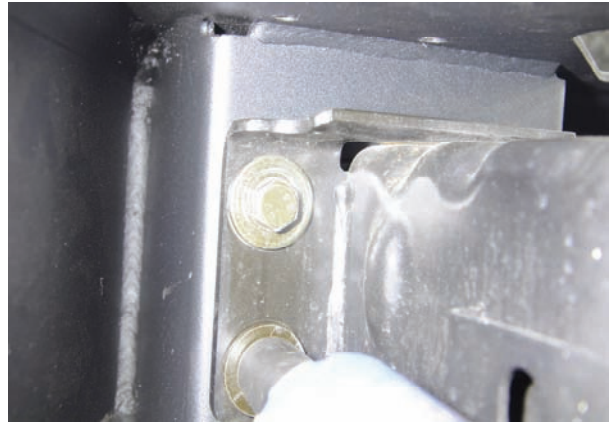
**STEP 5**

Once you remove the factory OE bumper, unclip the fog light connectors that connects the fog lights to the bumper and unclip the wire harnesses using a flat screwdriver along the bottom edge of the bumper to completely remove the factory bumper shown in Fig 5.



### **Step 6**

Place the bumper onto the frame ends and align the studs. Install the (4) 12mm x 40mm bolts, washers, and lock washers through the frame end and thread into the bumper.



### **Step 7**

Install the 12mm lock nuts and flat washers onto the studs on the inside of the frame rails. Tighten all of the bumper mounting hardware using a 19mm socket. Torque to 60ft-lbs.



### **Step 8**

Plug the correct wiring harness adapter into the factory fog light plug. Then plug the supplied flush mount LED to the wiring adapter. Attach the LED using the 5mm bolts and washers. Tighten using the supplied Allen wrench.



### **Step 9**

Install the supplied 20" LED single row light into the bumper hoop using the supplied hardware. Tighten using the supplied Allen wrench. Install the hoop assembly onto the top of the bumper using the supplied 8mm hardware. Tighten using the supplied Allen wrench. Wire the light according to the supplied light instructions.





By purchasing any item sold by Rough Country, LLC, the buyer expressly warrants that he/she is in compliance with all applicable , State, and Local laws and regulations regarding the purchase, ownership, and use of the item. It shall be the buyers responsibility to comply with all Federal, State and Local laws governing the sales of any items listed, illustrated or sold. The buyer expressly agrees to indemnify and hold harmless Rough Country, LLC for all claims resulting directly or indirectly from the purchase, ownership, or use of the items.

